

CAMBRIDGE CARBON FOOTPRINT

# ANNUAL REPORT 2024



***“The greatest threat to the planet is  
the belief that someone else will save it”***

**- Robert Swan, Polar Explorer**

FRONT COVER: IMAGINARIUM TAKEOVER OF KINGS' COLLEGE  
BACK COVER: PROMOTIONAL PHOTO FOR OUR “CAMBRIDGE  
CROTCH REPAIR WORKSHOP” FEATURING A LOCAL CYCLIST  
WEARING HIS MENDED JEANS



# CONTENTS

* Letter from the Chair	1
* Meet the team	2
* Executive summary	4
* How we work	6
* Outreach and engagement	8
* Increasing access to local repair	10
* Reducing home energy use	12
* Skills for climate action	14
* Building influence	15
* Financial statement	16
* 2025 and beyond	18





# LETTER FROM THE CHAIR



**SANDY  
CHIDLEY**  
Chair of Trustees

## LAUNCHPAD TO IMPACT

2024 was a standout year for Cambridge Carbon Footprint. We reached more people than ever – delivering 179 events, supporting over 1,500 volunteers and engaging nearly 10,000 people across Cambridgeshire.

Our work took many forms: from the creativity of the Imaginarium at King's College to the hands-on impact of Repair Cafes, thermal imaging, and clothes swaps. These projects brought communities together, built practical skills and made real reductions in carbon emissions. We expanded our Zero Carbon City Training and Open Eco Homes programme, supported the Right to Repair, and helped develop local climate leadership. Through strong partnerships and grassroots engagement, we've demonstrated how local action can drive systemic change.

This success reflects the hard work of our staff, volunteers, funders and trustees. Special thanks go to Alana Sinclair, our Manager for over 12 years, whose leadership and dedication have been central to our impact. We also welcomed Siobhan Mellon as our new General Manager – a lovely circular moment as she rejoins CCF after having worked with us as a project co-ordinator 15 years ago. As we move into 2025 with exciting new projects and a growing team, we remain committed to building a low-carbon, community-led future.

Thank you for being part of this journey.

A handwritten signature in black ink, appearing to be 'Sandy Chidley'.

## ACKNOWLEDGEMENTS

Cambridge Carbon Footprint's impact in 2024 was made possible by the combined efforts of our wonderful volunteers and staff. Over 1,500 volunteers contributed their time, ranging from newcomers to experts, and from one-time helpers to those who gave many weeks of support. Roles included office work, repairs, advice, events, and governance. We are grateful to them all. Our dedicated staff team worked hard throughout the year, going above and beyond to deliver many successful projects – huge thanks to them all. Special thanks go to Alana Sinclair, who left in November to return to her native Australia: her tireless commitment has contributed enormously to CCF's success and we wish her the very best for the future. We extend our thanks also to Libby Peachey, who stepped down from the Trustee Board after 5 years of kind support and guidance, for which we are very grateful.



# MEET OUR STAFF...



**Siobhan Mellon**  
**General Manager**

Siobhan joined CCF in November. Before that she was lead Climate Change Officer at South Cambs District Council. She recently completed a Masters in Regenerative Economics.



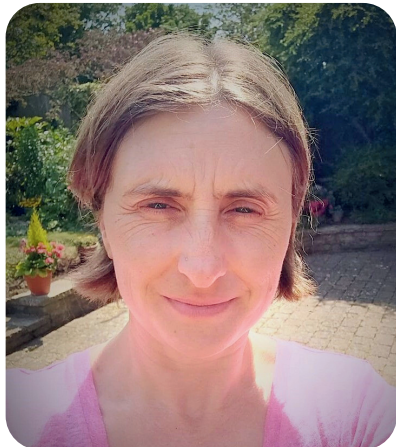
**Nicole Barton**  
**Community Engagement Manager**

Nicole has been organising CCF's volunteers and bringing together amazing events for CCF since 2014.



**Sandy Skelton**  
**Repair Cafe Officer**

Sandy developed our Zero Carbon City Training programme. She now leads the Repair Cafe Network, bringing passion and rigour from her academic background to the role.



**Fran Sutton**  
**Home Energy Officer**

Fran brings to her role a flair for project management and her own experience as an Open Eco Homes host.



**Mitchell Phillips-White**  
**Project Officer**

Mitch is skilled and experienced in community engagement around a low carbon future. A recent graduate of Politics and International Relations, he leads the delivery of our Zero Carbon City Training programme.

*We make a little  
go a long way*

*Regular donations allow us to  
continue & expand our work. Please  
consider supporting us in this way.  
It takes just 3 minutes!*

QR code





# ...AND TRUSTEES

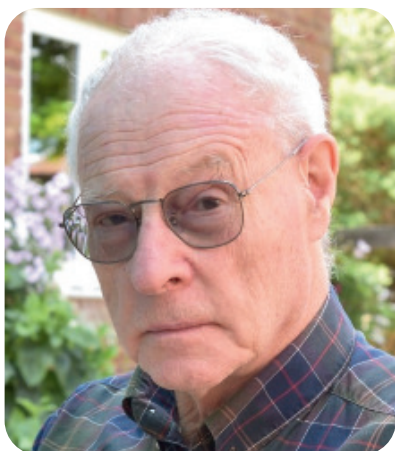


## **Sandy Chidley - Chair**

Sandy combines a background in social research and policy evaluation with a deep interest in supporting individuals and communities to move ethically and equitably towards low-carbon lifestyles.

## **Edward Coulman-Cook - Treasurer**

Edward brings passion for environmental sustainability and a wealth of experience in finance in the non-profit sector to his role.



## **Iain Smith - Secretary**

A retired physicist/engineer with a low carbon transformation of his own home underway, Iain brings experience in previous Trustee roles to CCF.

## **Nicole Dang**

Research psychologist and self-described eco-minimalist, Nicole is our longest serving Trustee. Her own home retrofit has cut energy use by 70%.



## **Shaun Lindsay**

Shaun brings a wealth of expertise from his work in IT for a social housing provider and his background in engineering. He is also a former OEH host.

## **Kirsten Newble**

Kirsten got involved with CCF after borrowing a thermal imaging camera and embarking on her own home retrofit. She has experience in marketing and communications and also holds an MBA.



## **Stacey Ruggles**

Stacey learned about CCF whilst enrolled on a green skills boot camp. She brings her love of writing and experience from her career in marketing and communications.

## **Clare Dyer-Smith**

Clare brings experience from her research career in renewable energy and roles in programme management, community engagement and governance to CCF.







# EXECUTIVE SUMMARY

The 2024 Cambridge Carbon Footprint Annual Report highlights another successful year of inspiring and supporting climate action. Over the past year, we expanded our presence across Cambridgeshire through our own events and by empowering individuals and communities to lead their own engagement and carbon-cutting initiatives. The impact of this strategy is reflected in our data.

We connected with more people than ever before, and our event numbers reached a new high. This report outlines our key projects, accomplishments and financial status.

## HIGHLIGHTS

- \* With an incredible 17 new organising groups starting up in 2024, there are now more **Repair Cafes** per capita in Cambridgeshire than anywhere else in the UK! Cambridgeshire Repair Cafe Network's ambition to see a Cafe on every high street may soon be a reality.
- \* CCF and our brilliant **Outreach Team** managed to run 32 talks and stalls in 2024
- \* 2,300 visitors and 16 environmental and educational organisations joined us for the unique and fantastical **Imaginarium Takeover of King's College**. How can we create a greener, fairer and more connected future if we can't imagine what it will look like?
- \* 496 people were trained and able to borrow one of 18 **thermal imaging cameras** located across the region.







## 179 EVENTS RUN

In 2024, we helped to deliver 179 events. We organised 80 events, and we supported other organisations to run 99 events in local communities and workplaces.



## 9,647 ATTENDEES

In total, we had 9,647 attendees at the events we organised or supported this year. Our largest event was The Imaginarium at King's College with 2,220 attendees.



## 10,829 VOLUNTEER HOURS GIVEN

1,521 volunteers donated 10,829 hours to supporting our work in 2024. Huge thanks to everyone who helped throughout the year.



## £136,445 TIME DONATED

When calculated at the real living wage of £12.60/hour, our volunteers donated £136,445 worth of time to CCF in 2024. Thank you so much!





OPEN ECO HOMES HOST PAUL SHARING HIS OAKINGTON HOME  
PHOTO CREDIT: IAN LAMBERT

## HOW WE WORK

We inspire and empower individuals and communities to take action on climate change. We offer practical, locally focused guidance and support to help individuals cut carbon emissions, encouraging shared learning and collaboration.

Our approach includes:

- Running events that motivate people to take climate action, backed by training and tools that build knowledge and practical skills.
- Supplying resources and assistance to empower communities to lead their own carbon-cutting initiatives.
- Partnering with community groups to extend our reach and engage new audiences.





HISTON SWISHERS

## OUR VISION

Our vision is of thriving zero-carbon communities.

## OUR MISSION

Our mission is to inspire and support action on climate change.

**OVER 60% OF THE CHANGES NEEDED TO GET TO NET ZERO REQUIRE ACTION AT THE LOCAL LEVEL**

*Net Zero - The UK's contribution to stopping global warming*  
Climate Change Committee (2019)



# OUTREACH & ENGAGEMENT

*Meaningful climate action requires significant social change and active community participation. By transforming discussions about climate change into engaging, memorable experiences, we empower individuals and communities to envision and contribute to creating a greener, more sustainable world. Our community outreach and engagement efforts are at the heart of our mission, inspiring change and building collective will to tackle climate change.*

## THE IMAGINARIUM TAKEOVER OF KING'S COLLEGE



COMMUNITY ARTIST HILARY COX CONDRON

**The Imaginarium Takeover of King's College**, a collaboration between CCF, the University of Cambridge, [Cambridge Curiosity and Imagination](#), and community artist Hilary Cox Condon, was a huge success. Over the Cambridge Festival weekend in March 2024, the event attracted a diverse mix of over 2,200 visitors, primarily families, to the marquees. Sixteen organisations participated, engaging the public on sustainability topics, including Flight Free UK, Cambridge Sustainable Food, Transition Cambridge, The Wildlife Trust, South Cambridgeshire District Council's Zero Carbon Communities, The Shared Waste Team, and On the Verge. The Connect, Repair, and Re-imagine areas complemented the collective imagining space, which featured art installations, a soundscape, mycelium under a microscope, and a children's choir, all beautifully curated by CCI and Hilary. The event was supported by 130 volunteers and generated significant publicity.

## THE IMAGINARIUM LEGACY PROJECT

The University of Cambridge's Engagement Team gave CCF funding to capture and expand the innovative collective imagining work we've been doing with Imaginariums. A £5,000 grant allowed CCF and our Artist in Residence, Hilary Cox Condon to develop an online Imaginarium Handbook and accompanying Event Kit for all to borrow, free of charge. In 2024 the Kit was used by East Cambs



Climate Action to host Ely's first Imaginarium where new local MP Charlotte Cane joined the 200 curious visitors. Burwell Carnival also hosted its first Imaginarium.

# USING IMAGINARIUMS TO SUPPORT NEIGHBOURHOOD PLANS

‘Small Village, Big Conversation’ was the name of an event organised in June 2024 by Haslingfield Parish Council’s Neighbourhood Plan Committee and Haslingfield and Harlton Eco Group. They used the Imaginarium model and resources to engage the community around their Neighbourhood Plan. A marquee was themed into 6 key areas they wanted to explore. They used imagining techniques, art, facilitated discussion groups and inspiration cards to spark engagement around the following:

- Affordable and Sustainable Housing/Development
- Climate Resilience, Biodiversity and Energy
- Economics – Amenities, Paid and Unpaid Work and Self-sufficiency
- Connections, Transport and Travel
- Mental health, Wellbeing, Relationships
- Character, Heritage and Design



## TALKS AND WORKSHOPS

In 2024, CCF organised 32 outreach talks, activities and stalls with the Grand Arcade being our most frequent host. Our volunteer Outreach Team has been outstanding, popping up at workplaces, shopping centres and community events all over the City and County on a near weekly basis to talk to people about climate change and carbon emissions, and to help them to measure their own carbon footprints.

Audiences for outreach talks and stalls included residents in new housing developments such as Ironworks, communities in the Abbey Ward, and companies such as RxBiologics and Cambridge BID.

## SWISHES

The CCF Swish (clothes swaps) Kit is a free bookable resource available for local people, community groups and businesses wanting to run their own clothes swap events. In 2024, our Swish Kit facilitated 25 clothes swap events, hosted by a diverse range of organisations including firsts in Cottenham, Exning, Shepreth and Burwell and at the British Antarctic Survey! These events successfully diverted 1.7 tonnes of clothing from the waste stream, resulting in an impressive **43 tonnes of CO2e saved** by encouraging reuse instead of new purchases.

Histon hosted another mega-swish, with nearly three quarters of a tonne being swapped in a single afternoon. The Histon and Impington Youth Eco Council were once again key to the event, hosting an entire hall to themselves. It was a truly intergenerational event with visitors from 2yrs - 85yrs! 53 volunteers made the event happen.

Swishes continue to be a powerful tool for engaging communities on climate and environmental issues with some featuring outreach stalls, and six sewing repairs alongside. Swishes once again proved to be effective fundraisers with one organised by families affected by dementia raising £650 for The Alzheimer’s Society. The organiser wrote, ‘...a big thank you to everyone who baked, swapped and helped! Our mums would have enjoyed a fun afternoon. We shifted 300lbs of clothes away from landfill and raised around £650 and counting...a big shout to Cambridge Carbon Footprint for their Swish Kit.’



# INCREASING ACCESS TO REPAIR

Repair Cafes are community events where people who need things to be repaired meet skilled volunteers who enjoy fixing things. The Cambridgeshire Repair Cafe Network (CRCN) supports community repair by providing training, resources and ongoing support to a growing community of repairers and organisers. As part of a global movement, with over 3,500 Repair Cafes worldwide, our network tackles climate change and throwaway culture by making repair accessible to our local communities and fostering a sense of solidarity and collective agency. There are wider barriers to repair that limit what we can achieve in the room. To tackle these, we work with the National Community Repair Network to promote the UK Repair & Reuse Declaration and add item-level data to the International Open Repair Alliance Database, supporting an evidence-based campaign for the right to repair.

## OUR 2024 STATS

75	Repair Cafes run
3,003	Visitors
7,124	Volunteer hours
£90K	Worth of volunteer time
17	New organising groups
2,711	Items seen
70%	Of items repaired
35t	CO2e avoided
5t	Waste prevented

## OUR NETWORK

Thanks to the dedication of community organisers and volunteers, and with the support of CCF, the number of Repair Cafes held in Cambridgeshire tripled over the last two years, with 75 events held in 2024. Seventeen new organising groups were established in the region, bringing the total number of groups in Cambridgeshire up to 40. Over 3,000 visitors attended Repair Cafes, bringing 2,711 items to be repaired. With a 70% repair success rate we helped prevent 5 tonnes of waste and avoid 35 tonnes of CO2e. Aside from the statistics, 2024 was a year of highlights for the network!

## CELEBRATING 10 YEARS

2024 marked 10 years since the first Repair Cafe in Cambridgeshire. We celebrated the occasion with a Network Forum, unveiling our community quilt, enjoying cake donated by Barbarella's Cafe (in return for fixing some kitchen appliances for them) and making plans to consolidate what we've achieved and expand our impact.





# RIGHT TO REPAIR

We supported the national campaign for the right to repair by urging Cambridgeshire MPs to match the enthusiasm for repair in their constituencies and support the **UK Repair & Reuse Declaration** which calls for a range of policy measures that further repair and reuse. So far, 4 of 7 Cambs MPs have engaged in our campaign: Ian Sollom MP, Pippa Heylings MP and Charlotte Cane MP signed the UK Repair & Reuse Declaration, and Daniel Zeichner MP & Minister of State at Defra wrote a letter to colleagues in support of the campaign.

# FOLK FESTIVAL

We were delighted to support a Repair Cafe at Cambridge Folk Festival organised by Frank from Repair Cafe Marlow. It was pure joy! We were a bit unsure what sort of things need repairing at festivals. Turns out, it's all sorts: umbrellas, bunny suits, pool toys, fans, camping chairs, bags, blow up mattresses, flame throwers, bikes and much more!



## The “happiest minister in the land”

Daniel Zeichner, MP for Cambridge and Minister of State at Defra attending the International Repair Day Repair Cafe held at the Grand Arcade where he got his e-bike light fixed



# WE'RE ON BIN LORRIES

Thank you to the Greater Cambridge Shared Waste Service and the Cambridgeshire County Waste team, who are advertising our network on 3 bin lorries and at all Household Waste Recycling Centres in the County. One bin lorry does the rounds in Swavesey, Milton, Bassingbourn, Melbourn and Linton, the other two are used flexibly across Cambridge & South Cambs - let us know if you spot one!



# PARTNERSHIPS

In 2024 we offered volunteering opportunities to Xylem Water employees, ran events as part of the award-winning ‘Let’s Go Circular’ initiative at the Grand Arcade (including our inaugural Elf Repair Cafe), forged a new partnership with Cambridge BID and received funding from South Cambs District Council & Cambs County Council. A huge thank you to everyone involved - we couldn’t do it without you!



of Repair Cafe visitors felt more motivated to live sustainably

# REDUCING HOME ENERGY USE

Heating our homes accounts for 17% of the UK's total carbon emissions. Retrofitting our homes to improve their thermal and energy efficiency would not only make them more comfortable, but also help to bring down energy bills and reduce carbon emissions too. Retrofit can be costly, but even when cost is not an issue homeowners often find the abundance of advice overwhelming, leaving many unsure of where to start. Our Open Eco Homes and Thermal Imaging projects are designed to cut through the confusion and help people take meaningful steps to improving their home's energy efficiency and sustainability.

## OPEN ECO HOMES

For the last 15 years, CCF has been actively engaging the public in discussions around home energy efficiency and retrofitting through our Open Eco Homes (OEH) project. As one of the longest-running projects of its kind in the UK, OEH has attracted over 140,000 visitors to our free eco home tours, talks, events, and online content. This year our events brought people together around a diverse range of topics, from 'the all electric home' and 'climate change gardening' to 'retrofitting historic homes'.

During 2024, we hosted 23 tours and 7 expert led talks, including a mix of in-person and virtual events. Amongst our 9 featured homes, we showed how energy efficiency and designing for accessibility can complement each other, how natural materials such as cork can be put to beautiful effect, and what can be achieved when reaching Passivhaus Plus. Our seven highly popular talks included a new look at a much loved subject 'Keeping Homes Cool in a Heatwave', as well as taking a deeper dive, with Bean Beanland from the Heat Pump Federation asking "Is a Heat Pump Right for You?" A popular and engaging talk with a panel of experts led by Annie Naughton of Keystone Architecture & Design introduced the audience to "Retrofitting Historic Homes," looking at the practical and planning aspects of improving our older housing stock.



*"Really useful real world experience."*  
**Tour Participant**

## OUR HOME ENERGY 2024 STATS

**384 people** attended Open Eco Homes events.

**86%** found the events **useful or extremely useful** in helping them to undertake their own home improvements.

**496 people** trained to use thermal imaging cameras.

**18 thermal imaging cameras** available across Cambridge City, South Cambs and Hunts.

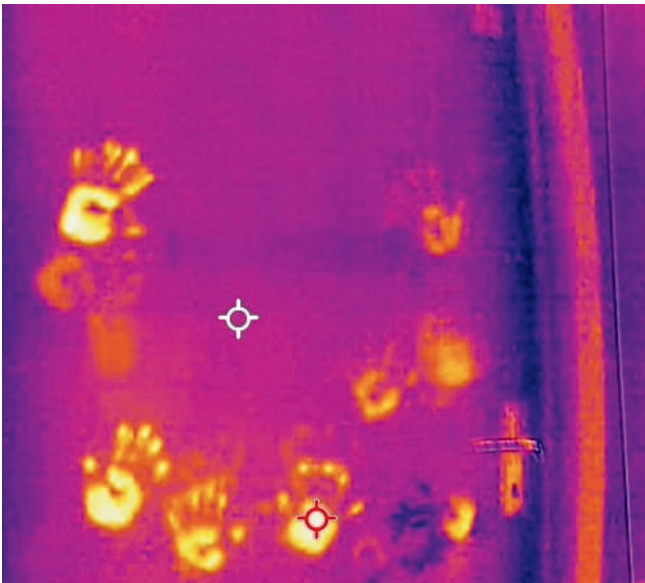


# THERMAL IMAGING

Since 2010, CCF has been offering free thermal imaging (TI ) training and camera loans during the colder months. During the winter months of 2024, 496 people were trained and able to borrow one of 18 TI cameras located across the region. These thermal imaging cameras help homeowners to identify where their buildings are losing heat due to poor insulation, draughts, damp and other issues. With heating costs remaining a significant challenge in the UK, our thermal imaging service is more relevant than ever.

We are immensely grateful to our dedicated volunteers who hosted cameras for loan, making it easy for users to borrow a camera locally. This year we were particularly excited to welcome and be supported by Huntingdonshire District Council, who joined Cambridge City and South Cambridgeshire District Council in enabling more people than ever to benefit from thermal imaging.

We had a slight downturn in the number of people reporting their home surveys to us, but what was reported indicates that, on average, 1 in 5 borrowers survey more than one property - this suggests that TI camera use may be helping to accelerating the uptake of home energy efficiency measures far more than initially thought.



*“Definitely do it!”*  
**Thermal imaging camera borrower**



# COMMUNITY SURVEYING

This year we supported four community groups to undertake volunteer led surveys of properties and homes within their area. It was great to continue working with Sustainable Cottenham, and Warboys Climate & Environment Group, who had both piloted this initiative last year, and to welcome Eversden Parish Council, and the Wildlife Trust for Beds, Cambs & Northants.

Volunteers were able to undertake our training and use a TI camera for use over extended borrowing periods. Our village volunteers successfully contacted local residents and surveyed their homes, offering advice and signposting for fixing issues. Householders were often really engaged in the survey themselves, many having never seen thermal images, and our volunteers found this a useful means of connecting and communicating with people about warmer homes and carbon reduction, many of whom they might not otherwise have met.

*“I enjoyed helping people to ensure that they are making the most of their precious energy resources.”*

**Community Volunteer Surveyor**

# SKILLS FOR CLIMATE ACTION

Communities and local businesses are in a unique position to address the climate crisis. They are responsive to conditions on the ground, and quickly able to adapt as conditions change. Through engaging and cultivating local climate leaders, bolstering their carbon literacy and organising skills, and empowering them to find solutions that fit the wants and needs of local people, CCF is helping to build a network of resilient and climate active communities.

## ZERO CARBON CITY TRAINING

In 2024, we continued our successful Zero Carbon City Training, generously funded by Cambridge City Council. This work offered local practical support to encourage residents to take action to reduce their carbon impact. We travelled to where people lived and worked and met them where they were on the low-carbon journey.

Activities included ‘How To Crack On With It’ sessions delivered as talks, workshops and workplace seminars. There were stalls at venues including the Grand Arcade, Trumpington Community Hub and Abbey People. Overall we engaged nearly 700 residents: 585 of those on stalls and 92 in group sessions. Monitoring data revealed the successful impact of these sessions with a 22% increase in participants’ understanding of their carbon footprint and a 20% increase in their motivation to take action.

By focusing on how living sustainably can save us money and improve wellbeing, we expanded our reach into lower-income communities and those living in rental or social housing. Up-to-the-minute advice on available grants and low-cost, or no-cost measures helped ensure that there were options for all.



*‘Cheers Mitchell, I really enjoyed your talk given at the Climate Change Café, and I learned a lot. It was great to hear about some completed local projects that are now leading to further projects elsewhere in the city; like the channelling of excess water to nourish dry areas and create thriving gardens.’*  
**Lorna (‘How to Crack on with It’ attendee at Abbey People)**



# BUILDING INFLUENCE



PLANNING LITTLEPORT'S FIRST REPAIR CAFE  
IN THE BEAUTIFUL ADAMS HERITAGE CENTRE

Effectively tackling the climate emergency requires strong connections and active collaboration. In 2024, we continued to expand our influence within the region by engaging with local councils and community leaders that were beyond our usual reach.

Funding from the County Council allowed us to do some in-depth capacity building work that brought new Repair Cafes to Littleport, Wisbech, Ramsey, Ely and St Neots.

Throughout the year, we participated in the City Council's Local Climate Change Forum and Climate Leaders group led by Chris and Linda Pointon. Fran represented CCF's home energy work at the Huntingdon Climate Forum and Sandy's talks to the University of Cambridge's technicians group helped embed Repair Cafes into the University and they've recently become an organising body rather than simply a host.

Imaginarium work was adopted by Cambridgeshire County Council who supported us to work inter-departmentally to deliver the Heart of March Imaginarium at March Library. It was our great pleasure to co-deliver with the Libraries Service and March based youth arts organisation 20Twenty Productions, Westwood and Cavalry Schools. A new Fenland Environmental Projects Forum has since sprung from the Heart of March.

CCF continues to write a monthly Opinion Piece for the Cambridge Independent, covering issues ranging from environmental justice and climate anxiety to energy poverty and the circular economy.

*"I was thrilled to see how the Imaginarium enabled people to engage with such an important topic in wonderfully creative ways. Our community always inspired me with their creative responses to nature and climate, and I hope the event has enabled new ideas and conversations to continue."*

**David Cain, Public Engagement and Festivals Manager,  
University of Cambridge**



CHARLOTTE CANE MP SIGNING THE REPAIR  
DECLARATION AT ELY'S FIRST IMAGINARIUM

# FINANCIAL STATEMENT

## \* FINANCIAL REVIEW

Total income was 6% lower in 2024 than in 2023, falling from £147,419 to £137,883, due largely to a reduction in donations. We were pleased to be awarded an unrestricted grant of £25,000 from the Postcode Places Trust. We also secured a new £15,000 contract from Cambridge City Council, which allowed us to take on a fifth member of staff on a temporary contract. £12,500 of this funding was deferred in the accounts to cover payroll costs for this contract in 2025.

Much needed investment in IT was one of the reasons for a rise in expenditure, which was £139,422 compared with £126,304 in 2023.

We finished the year with a small deficit of £1,539.

At year end unrestricted funds totalled £49,804 compared with £34,944 at 2023-year end.

## \* RESERVES POLICY

Donation income is the primary funding source for the organisation's fixed costs. As donated income cannot always be predicted, and the success of funding bids is not guaranteed, the trustees believe it is prudent for the charity to aim for a minimum reserve equivalent to three months' expenditure. (In 2024 this averaged £34,855).

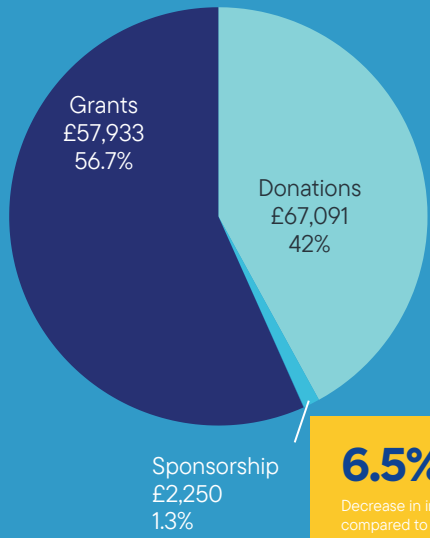
This provides:

- the ability to meet unforeseen expenditure, including costs arising should CCF be wound up (closedown costs, redundancy payments, return of grant funding);
- flexibility in achieving our objectives; and
- a financial 'cushion' until additional core funding can be secured.

In accordance with The Charity Commission's guidelines, the Board of Trustees review this policy annually and manage the cash flow in an appropriately prudent manner.

£137,883

2024 Income (2023 £147,419)



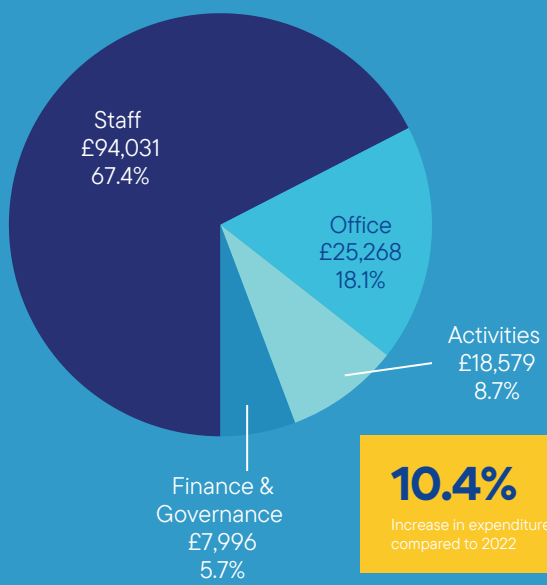
6.5%

Decrease in income compared to 2023



£139,422

2024 Expenditure (2023 £126,304)



10.4%

Increase in expenditure compared to 2022



(£1,539)

2024 Balance (2023 £21,115)



We are immensely grateful for the financial support received from individuals and organisations. Your gifts and donations enabled us to carry out the work detailed in this report. Cambridge Carbon Footprint and the work that we do would not exist without your help.

### **Supporters in 2024 included:**

AC Architects  
Cambridge BID  
Cambridge Building Society  
Cambridge City Council  
Cambridge Design Partnership  
Cambridgeshire County Council  
Cambridge Retrofit Hub  
CFCI Trust  
Cobb Charitable Trust  
Grand Arcade  
GV Harrison Building  
Greater Cambridge Shared Waste Partnership  
Huntingdonshire District Council  
Inclume Architects  
Keystone Architecture & Design  
Lambertian Architectural Photography  
M Reynolds RIBA  
Mackay's  
McCarthy Architectural Design  
Mole Architects  
PECT  
Postcode Places Lottery  
South Cambs District Council  
Wright Choice Property Services  
Xylem Water Inc.

**Powerful Climate Voices**

28/01/20 at The Institute of Astronomy

Cambridge Carbon Footprint

Cambridge Festival 2019

Destination Restoration

The first quarter of 2025 saw CCF work on an innovative and very successful 'Powerful Climate Voices' project funded by the City Council's Sustainable Cities Grant and the University of Cambridge. Over six months, CCF and our Artist in Residence, Hilary Cox Condrón worked alongside fantastic pupils at Parkside Community College's Social Action Group to amplify their voices around the climate and biodiversity crisis.

- Powerful Climate Voices was a communications training day for 40 children at the Institute for Astronomy – trainers included Pippa Heylings MP, award winning science communicator Richard Dyer and the PR Power Book regular Peter Gilheany.
- Pupils hosted a screening of two films for an ‘Anxiety to Action’ evening at St John’s College with Cambridge Moviemakers and a panel chaired by BBC presenter Tom Heap.
- Pupils from Parkside and Comberton VC worked tirelessly over the entire weekend of the Cambridge Family Festival to engage 1,200 members of the public on their carbon footprint. Pupils invited the public to get their Passports to a Flourishing World and join them on their ‘Destination Restoration’ journey.
- The finale saw 11 schools take over the prestigious Cambridge Union for a Debate for our Planet.

**Mr Cowley, Parkside's Geography Teacher**





OPEN ECO HOMES HOST DAVE, IN TRUMPINGTON  
PHOTO CREDIT: IAN LAMBERT

## OPEN ECO HOMES, REPAIR CAFES & ZERO CARBON CITY TRAINING

October 2025 will see **Open Eco Homes** delivering another season of inspiring tours and talks. The programme will include expert-led talks and free tours of eco homes across Cambridgeshire. Heat pumps will take centre stage with heaps of opportunities to visit one. We are also preparing to relaunch our **thermal imaging** services for the winter months, with training resuming in November.

On the **Repair Cafe** front, the Cambridge Crotch events marked the start of partnerships with the University of Cambridge and Cambridge BID. We worked with the Centre for Computing History to reimagine their collection taking into account the impact of tech. We engaged more deeply with the UK Community Repair Network including a Repair Café in Parliament.

With support from Cambridge City Council, we recruited a new Project Worker (Mitch) who will oversee an **expanded programme of stalls and outreach talks**. His role will be crucial in engaging the wider community and helping to drive meaningful climate action. To date, Mitch has been enjoying a lot of new work with Abbey People and launched a new local **Eco Directory**.





# STAY IN TOUCH



## CAMBRIDGE CARBON FOOTPRINT

01223 301842

[info@cambridgecarbonfootprint.org](mailto:info@cambridgecarbonfootprint.org)

[www.cambridgecarbonfootprint.org](http://www.cambridgecarbonfootprint.org)