



**Community Engagement:
Understanding and Connecting with Diverse Communities**

Judy Ling Wong CBE. Honorary President Black Environment Network (BEN)

Black Environment Network

Working across diverse sectors for multicultural environmental participation

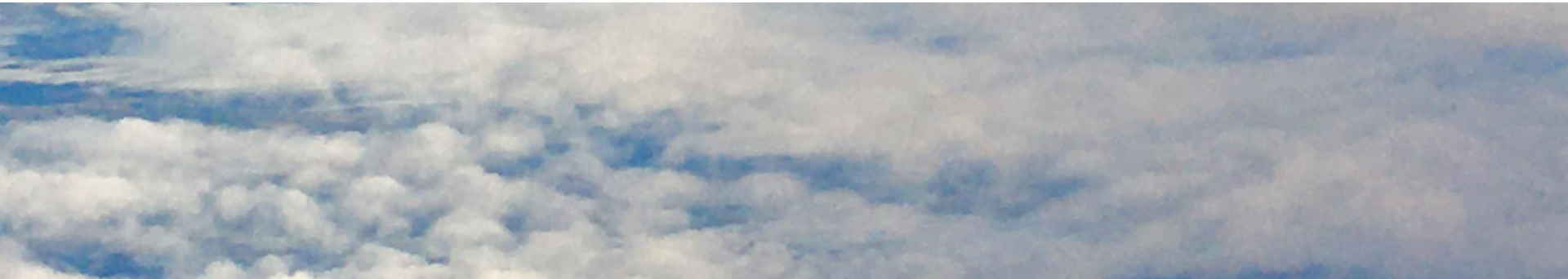
*BEN uses the word “Black” symbolically, recognising that the **black communities are the most visible of all ethnic groups**. We work with white, black and other ethnic communities*

A network of individuals and organisations working for change





Acton for Equality Diversity and Inclusion
structurally underpins climate justice
and environmental justice
on the road to zero carbon



**“Who we are
And
What we can achieve
depends on
How we see ourselves
against
The enormous
pressure
of
How others see us”**

Judy Ling Wong CBE



Multicultural World of our 21st Century Local and Global One Race Human Race

- **One race human race:** a unifying concept of multiculturalism. Cultures demonstrate the full range of the potential of the human personality
- Science tells us that humanity is **one blood-related family**, starting in Africa. Africa is our ultimate country of heritage
- Local global context of an **interdependent** world
- Our **local ethnic minorities are global ethnic majorities**
- **White people** make up **only 11%** of the world population
- The **mobility of people** is a prime characteristic of 20th and 21st Century life. We move for educational, social, cultural, environmental, economic reasons within and beyond nations
- Multiculturalism is **defined by presence**, not numbers
- Within the UK, our BAME communities are mostly **urban-based**
- Creatively extend the concept of group culture **beyond ethnicity** and countries of heritage





The Challenge from Greta (not at COP27) and the Young Generation
How quickly can we move beyond the Land of Blah Blah Blah?

Our vision at [#SHEchangesclimate](#) is for 50:50 representation across climate leadership.

It is time for men and women to work together, in equal partnership, to deliver climate solutions centred around social justice.



When we are not given the space...

...We create our own



Indigenous leaders meeting right now in historic meeting at [#cop27](#) with President-Elect Lula



Perception
Imagination

Inspiration

Hope Youth

Injury Trauma

Historical legacies

Atmosphere

Symbolism

Mental health

Fear Joy

Societal discourse

Technical domination

Equality Diversity Inclusion

Loss and damage

A just transition

Rate of change

Need for speed

Money and power

Democratic structures

Leadership

#SAVEOURPLANET

**As for the earth, We
spread it out and
placed upon it firm
mountains, and
caused everything to
grow there in perfect
balance.**


(Quran 15:19)



COP26

Agency Focus Radical
Pressure for Change
Direction of travel
Opportunities for change
Rights based structures
Front and Back of mind
Leadership
Zero carbon Net zero
Rage and Protest
Law as an instrument

Belief systems
Wisdom
Knowledge Science
Values
Cultural frameworks
Ways of seeing and being
Multiculturalism
One race human race
21st social renewal
Dreaming for real
Deep unconsciousness

 Cambridge Ethnic Community Forum
<https://cecf.co.uk>


Cambridge Ethnic Community Forum

A leading organisation within the **voluntary** sector in **Cambridge**, in working with Black and **minority ethnic** individuals and **groups**.

<https://cecf.co.uk> › [community-connections-south](#)

Community Connections South

The **Community** Connections **South** Project at the **Cambridge Ethnic Community** Forum is focused on bringing economically inactive people closer to the job market, ...

 Supportingcambridgeshire.com
<http://www.supportingcambridgeshire.com> › [bmegroups](#)

A directory page of information about BME Groups ...

Find a BME **group** for your **community** in **CAmbridgeshire** here. ... Action for Black and **Minority** and **Ethnic Communities Cambridgeshire** (ABMEC C.I.C).

Missing: ~~South~~ | Must include: **South**

 South Cambridgeshire District Council
<https://www.scams.gov.uk> › [media](#) › [key_stati...](#) PDF

South Cambridgeshire Area Profile: Key Statistics

Other **Ethnic Group**. 383. 0.3. 0.3. 0.6. White & Black Caribbean. 552. 0.4. 0.4. 0.8. White & Black African. 270. 0.2. 0.2. 0.3. White and Asian.

2 pages

 Cambridge City Council
<https://www.cambridge.gov.uk> › [links-to-equalities-gr...](#)

Links to equalities groups websites

Cambridge Ethnic Community Forum provides racial equality services to individuals and **groups** to help promote an understanding between people from different ...

 Office for National Statistics
<https://www.ons.gov.uk> › [censusareachanges](#)

How life has changed in South Cambridgeshire: Census ...

In 2021, 5.8% of **South Cambridgeshire** residents identified their **ethnic group** within the "Asian, Asian British or Asian Welsh" category, up from 3.7% in ...

Outreach, relevant activities, campaigns and partnership

- Make contact - research local EM groups and data bases
- Co-create the agenda for local activities and actions to protect nature and people
- Pledge one ongoing relationship to build understanding and process of developing trust
- Build partnerships to share contacts and experience
- Electronic participation. Avaaz, 38 degrees etc.

↻ Extinction Rebellion UK 🌍 Retweeted



George Monbiot ✓

@GeorgeMonbiot

The failure is baked in.
It is not an accident.
It's the design.



[theguardian.com](https://www.theguardian.com)

Our leaders had a final chance to halt climate breakdown. They failed each and...
It's a miracle that any one of us is alive today. Those with the power to grant that
miracle to future generations chose not to, says Guardian columnist George ...



Licypriya Kangujam on Twitter

"Today, I confronted with UK  Minister of Energy, Climate and Environment @ZacGoldsmith at #COP27. I asked him, "When will you release those jailed climate activists your Govt. arrested for protesting to stop new oil & gas license across UK?" He replied, "No idea" & run away!"

[twitter.com](https://twitter.com/licypriyak/status/1592188427050840065?s=48&t=2ngg_uZwanUg5TybQCXi1A)



When a young female climate activist won't give up:

[https://twitter.com/licypriyak/status/1592188427050840065?](https://twitter.com/licypriyak/status/1592188427050840065?s=48&t=2ngg_uZwanUg5TybQCXi1A)

[s=48&t=2ngg_uZwanUg5TybQCXi1A](https://twitter.com/licypriyak/status/1592188427050840065?s=48&t=2ngg_uZwanUg5TybQCXi1A)

10:07 pm



Indigenous Groups Are Key to Reversing Amazon Destruction

COP27 Reaches Breakthrough Agreement on New “Loss and Damage” Fund for Vulnerable Countries

20 November 2022

UN Climate Press Release



Credit: Kiara Worth

Cop28

Revealed: UAE plans huge oil and gas expansion as it hosts UN climate summit

Exclusive: UAE's fossil fuel boss will be the president of Cop28, making a mockery of the summit, say campaigners



📷 Adnoc is the world's 11th biggest oil and gas producer and delivered more than a billion barrels of oil equivalent in 2021. Photograph: Giuseppe Cacace/AFP/Getty Images

I'm a millionaire - this is why I'm at Davos
begging to pay more tax
Phil White



Millionaires Marlene Engelhorn and Phil White joined a Davos protest calling for higher taxes on the wealthy

'Tax us now': ultra-rich call on governments to introduce wealth taxes

Disney heiress and actor Mark Ruffalo among 'patriotic millionaires' who addressed world's elite at Davos



Abigail Disney was part of a group of 205 millionaires and billionaires from 13 countries to sign the letter. Photograph: Charles Sykes/Invision/AP

More than 200 members of the super-rich elite are calling on governments around the world to “tax us, the ultra rich, now” in order to help billions of people struggling with cost of living crisis.

The group of 205 millionaires and billionaires, including the Disney heiress [Abigail Disney](#) and The Hulk actor Mark Ruffalo, on Wednesday called on world leaders and business executives meeting in Davos for the World Economic Forum (WEF) to urgently introduce [wealth taxes](#) to help tackle “extreme inequality”.

Beyond aspiration structures concerning money limit the resources for change

- Almost two-thirds of the new wealth amassed since the start of the pandemic, £21trillion, has gone to the richest 1%
- Oxfam said a tax of up to 5% on the world’s multimillionaires and billionaires could raise \$1.7tn a year, enough to lift 2 billion people out of poverty, and fund a global plan to end hunger.



**Motivating people to take
action**

The Human Dimension

*“We love what we enjoy
and
we protect what we love”*

Judy Ling Wong CBE

The Countryside and All of Nature is Also Ours



- **Access to nature reserves and the beautiful countryside**
- **Guided walks illuminating the management of the countryside and the protection of nature**
- **Knowing nature at large inspires different local actions and rich local futures**



*Change
is
the coming
together
of*

*Thinking
Feeling
and
Action*



The 2 pillars of sustainable development:

The Relationship of People to Nature

The Relationship of People to Each Other

At the heart of Climate change is the failure of these two fundamental relationships



Building Multicultural Inclusion

Action, especially within deprived communities, has to be **underpinned by enjoyment** to make it sustainable

The context for action has to be seen to be **relevant** and at the center of our lives

Inclusive visibility

Multicultural relations within society enable BAME communities and the mainstream to unite around global issues such as climate change

Supporting **BAME Local Champions** is a great way forward - **Inreach**

Our multicultural communities are **intrinsically local/global people**

Information about participation set within **genuine relationships** and **resourced organisational frameworks** for inclusion – **commitment at the top** and **political will** as key drivers



People are the ultimate force for change
Community facing actions

- Theme 1 Representation**
- Theme 2 Engagement**
- Theme 3 Provision**





Theme 1 Representation – Affected communities should lead

- a. Put **community representatives** into place within **decision making structures**
- b. Nurture and support **diverse voices** within **decision making structures** to **share power**
- c. Nurture and support **community based champions** to **open up inreach**
- d. **Positive visibility** builds **cultural presence** and **counters negative cultural stereotyping**
- e. An **integrated approach** to **policy and action**, using a **human rights based approach**
- f. Support **diverse local representatives** to attend **high profile national and international events**

Inclusive public engagement confirms shared Local Historical Identity and builds a Sense of Belonging



Celebratory high profile planting event restoring the missing trees to the original 9 trees in the locality of Nine Elms in London with diverse presence in representation

Cultural Presence through Marking a Place with Memory

City Fringe Opportunities



The Sikh community planted a native oak woodland for everyone to enjoy

This city fringe project at Nottingham's Bestwood Country Park commemorates the 300th Anniversary of the Khalsa, their holy scriptures

Farm Visits to Inspire Entertain and Inform



Willowbrook Farm

JOIN US THIS WEEKEND!

RESPONSIBLE STEWARDSHIP

**Building an ethical
and sustainable world**

*Sustainable Buildings, Biodiversity, Energy Production, Waste
Management, Farming, Community & Charity.*



Living in harmony,
farming with nature.
More than a business,
it's a lifestyle.

MEET THE FAMILY



CLIMATE REFRAME

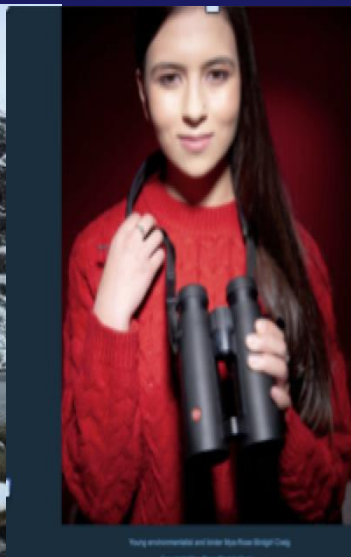
Amplifying BAME Voices in the UK Environmental Movement

Voices at your events

We are not at Square One

Database of multicultural activists and experts

www.climatereframe.org admin@climatereframe.org





Theme 2 Engagement – We benefit and we contribute

- a. Stimulate and encourage **grass roots movements** for change
- b. Connect with and **resource local ethnic specific community groups**
- c. Work within the context of an **ongoing partnership as equal partners**
- d. **Identify cultural specific dimensions** relevant to the actions to be implemented
- e. **Identify and address barriers** and support the **co-creation of solutions**



The Use of the Arts enables Fun and Informal Education

***Today I went
swallowing skies
to feed my being***

***The seagull cried
wild
against the sliding of the tide***

***“Why
Of all nature
do you choose
to swallow
emptiness?”***

IF NOT NOW - WHEN?

extinction
rebellion



Activism - Creative Sayings, Songs, Slogans and Straplines

Jungle Book reimagined

A group of dancers in orange and blue costumes are performing on stage under green lighting. They are in various dynamic poses, some with arms raised, suggesting a theatrical or dance performance.

SADL
ERSW
ELLS

Sadler's Wells in Angel

**Sadler's Wells
Theatre**

Akram Khan Company

A magical retelling
of Kipling's classic

Jungle Book Reimagined as a climate story



Climate Storytellers Collective

As we seek to understand the complex changes in climate and their rippling impacts, we need more than just science to guide us. Instead we must weave science into our social lives and share our thinking with our values, our histories, and our future aspirations. To do this we must engage the many different traditions and forms of storytelling to name our **climate stories**. Specifically, we seek to lift and resource those whose stories and voices are often not as clearly heard as they ought to be due to continued power dynamics which inhibit just climate action work.

Building the Capacity and confidence to Re-imagine Urban Spaces



The power of re-imagining opens up all our futures

Dagenham & Barking's Every One Every Day initiative has an elaborate community programme including extensive maker spaces



A Model Multifunctional Space – Burgess Park

Backyard to the largest housing estate in Europe combining contact – from meadows community beehives to outdoor exercise classes and a state of the art BMX track

Green School Grounds and Outdoor Learning - Foundation for a Life with Nature



Natural Thinkers 10 commitments:

1. Children have access to a range of natural areas and materials outside.
2. Children have opportunities to grow, pick and taste produce.
3. Children have access to gardening and digging.
4. Children care for their natural environment.
5. Children engage with the weather and seasons.
6. Children have opportunities to engage with wildlife.
7. Children have daily access to the outside.
8. Settings ensure no child is excluded from outdoor activities.
9. Settings ensure parents have opportunities to get involved with Natural Thinkers activities.
10. At least 1 member of staff must have attended Natural Thinkers training.

Policy Commitment and Resources

- The Government's Natural Environment White Paper (2011)
- Duty to promote race equality - The Race Relations Act 1976 (General Statutory Duty: Code of Practice) Order 2002
- UN Habitat Assembly - New Urban Agenda (2016)
- Political will
- Commitment at the top of organisations – policy, action plans, resource allocation
- Organisational culture
- Alignment with core aims
- Competing priorities

Practical Actions

Environment Sector Organisations

- Organisational structure and capacity
- Cultural knowledge and engagement skills

Social and community organisations

- Organisational structure and capacity
- Environmental knowledge and engagement skills

BAME Communities

- Levels of knowledge of environmental opportunities
- Racism, participation and levels of visibility
- Local champions isolated and lack support

Natural England Commissioned Report NECR127

Kaleidoscope: Improving support for black, Asian and ethnic communities to access services from the natural environment and heritage sectors

First published 05 September 2013

www.naturalengland.org.uk





THE MOSAIC MODEL



Engaging BME communities in National Parks



Supported by The National Lottery



Capturing Richness

Countryside visits by black and ethnic minority communities



Working for people and places in rural England





THE LEADING UK YOUTH MOVEMENT CALLING FOR URGENT ACTION ON THE NATURE CRISIS.

Nature in the UK is disappearing before our eyes. It's now or never to act on the twin nature and climate crises.

Every year is even more important than the last to influence policy and protect our natural world. At home and abroad, the UK has the opportunity to play a crucial role to address biodiversity decline and the climate emergency.

BOLD, CREATIVE CAMPAIGNING IS WHAT UKY4N DOES BEST.

We want ambitious action on nature.

Check out what we've done and what we're planning.



NOT SO FRESHWATER



PAST CAMPAIGNS



SILENT SPRING AT 60



NATURAL KINGDOM: WILD WALLS



NATURE LOSS: LINES IN THE SAND

UK Youth for Nature



Theme 3 Provision – A framework to release benefits and address needs

- a. **Build cross-sector links**, recognising the interconnectedness of environment, health and EDI, with training for outreach
- b. **Embed diversity and equality across sectors** to establish a framework of relevant provision
- c. **Resource local community based groups** such as youth clubs, or luncheon clubs for elders
- d. Give information to improve health through **personal action for self-care**
- e. Provide **interpretation services** and **multi-language information** – use Google Translate
- f. **Establish ethnic minority networks in workplaces** for support, consultation, and advocacy
- g. **Improve the local environment** – housing, green spaces, streetscapes etc.
- h. **Build equal access** to coming new wave of **green jobs** to achieve net zero
- i. **Policy and actions** including **activities for enjoyment and informal learning**



Green Jobs to meet the legal requirement of Net Zero

The Green Jobs Delivery Group and the Green Apprenticeships Advisory Panel

forms part of the government's ambitious plan to build back greener
and achieve net zero emissions by 2050

The emphasis is on skills provision and green careers pathways

Investment of £12billion Need for 2 million jobs

Creation of 430,000 green jobs by 2030

The term 'green job' is used to signify employment in an activity that directly contributes to - or indirectly supports - the achievement of the UK's net zero emissions target and other environmental goals such as nature restoration and mitigation against climate risks

What green jobs do you need for your area and what are your training and support needs?

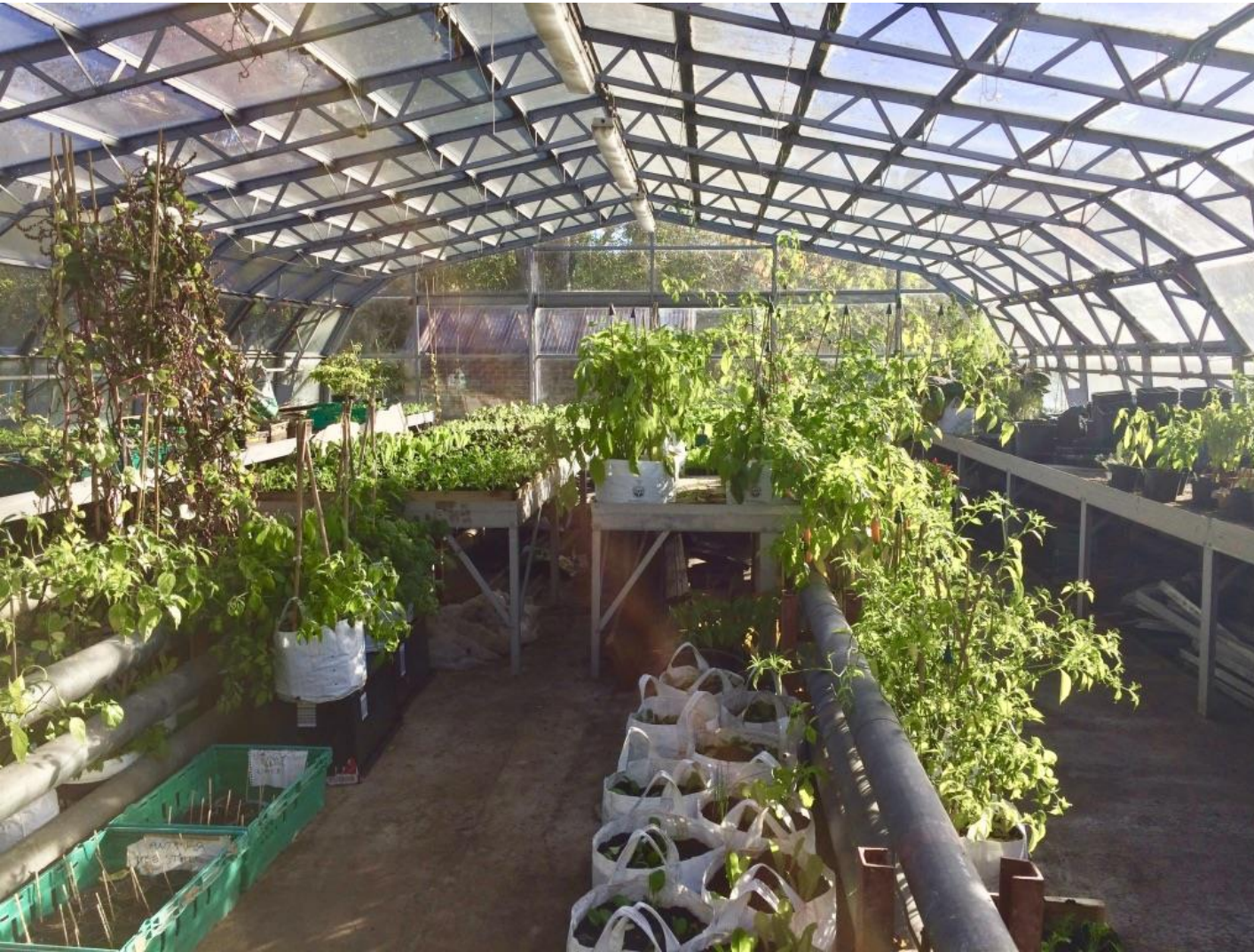


**Wildflower meadows and clusters of trees
to enable a joyous experience of nature at scale
involving communities on social housing land or parks**

The Popular Perception of Food Growing and Gardening as Nature

The Lambeth Plots initiative – ARUP and Myatt's Fields Park

Mapping Lambeth's food growing potential and enhancing Food Security and Resilience



Myatt's Fields Park grows and gives away 50,000 plug plants for allotments, gardens and balconies to enable the community to extend the growing and harvesting season



Building Diversity Equality and Inclusion

Building infrastructure

Making Inclusive Policy-Making Visible

Strengthening the Policy Position





Making Inclusive Policy-making Visible

1. Put **high profile organisational champions** into place
2. Build the **prestige of action** for particular themes of concern
3. Sign up and make **supporter organisations and individuals** representing target groups visible
4. Use and support **representative instruments** as exemplified by Climate Reframe database of activists
5. Create resources and **promote named collaborative networks**
Promote and make **reports and research accessible**
6. Review and co-create **updated policies and strategies**
7. Map **monetary value and benefits**



Strengthening the Policy Position

Use related and wider policy instruments and reports already in place plus recognised overarching concepts to strengthen cross-sector policy making at different levels

- **Future of Generations Act Wales**
- **Human Rights Act**
- **The 9 Protected Characteristics**
- **Duty to promote Race Equality**
- **UN Habitat New Urban Agenda**
- **UN Habitat Declaration of First Global Stakeholders Forum**
- **Recognition of lived experience, links between health, wellbeing and quality of natural and built environment, the vast societal costs of multiple deprivation, climate justice**



First Global Stakeholders Forum – UN Habitat Assembly



Well-being of Future Generations (Wales) Act 2015

A more equal, prosperous, resilient, healthier and globally responsible Wales, with cohesive communities and a vibrant culture and thriving Welsh language... go beyond simple GDP measure towards what affects the **economic, social, environmental and cultural** well-being of Wales.

Well-being of Future Generations Act for the UK now going through the House of Lords

Our ethnic minorities are local and global people



Climate Justice calls for people centered policy

- **People centered policy**
- **Diverse representative voices**
- **Building a movement of diverse people, recognising their agency to green their local environment and contribute to net zero**
- **Health and well-being as a fundamental feature of Resilience**
- **Linking living conditions, jobs and the environment**
- **National and international programmes of developmental activities for green infrastructure**

Local actions sit within national and international frameworks of policy



*Government, organisations, community groups, and individuals can
work together to co-create policy and actions for our future*

- The content of policy, strategy and resourcing are the **expression of commitment to people** around particular themes of concern
- The **integration of social, cultural, environmental and economic dimensions** can effectively protect people and planet



**“There is no such thing
as a
pure environmental project**

**A so-called
pure environmental project
is one that
has rejected
its social, cultural
and
economic dimensions.”**

Judy Ling Wong 1987

C'MON EVERYBODY!



As experts on climate change, many people ask us, what can I do personally about it?

We spoke to our team of scientists at the [Grantham Institute – Climate Change and the Environment](#) at Imperial College London and have created a digital feature to highlight [the most achievable ways you personally can make a difference.](#)

**9 Things you can do about Climate Change
Grantham Institute**

Moving from Relational Tolerance to the Contribution of Authenticity

Integration of Head and Heart within the person to address Local and Global Realities

- Rational. Practical. Assertive. Action-oriented. Directive. Evidence-based. Scientific.

With

- Inspiration. Emotion. Magic. Soul. Sensuality. Sensitivity. Spontaneity. Contemplation.

Releasing and increasing the Potential for Environmental Action

- Authenticity and awareness through fullness of presence
- Creative actions within personal encounter
- Brainstorming cross-cultural solutions within teamwork
- Put into place structures of empowerment for cultural equality
- Incorporating cultural dimensions into committees and in policy work
- Incorporating cultural dimensions into settings for life and work
- Integrating Cultural Visions and Values into Sustainability





*Drawing Inspiration
from the Ageless Wisdom
Cosmology*

**Policy
is
the expression
Of
Love-Wisdom
and
its outcome
is
Beauty**

Black Environment Network

www.ben-network.org.uk

Contact:

judy@ben-network.org.uk

www.judylingwong.co.uk

