



Green Homes Grant

Tom Bragg and Peter Bates



Green Homes Grant (GHG)

Video recording – write in Chat if you don't want to be shown
Also write comments, suggestions and your Questions for Q&A



- **The Grant – Introduction** **Peter**
- **Retrofit and the need for a plan**
- **Measures**
 - **Primary**
 - **Secondary**
- **Q&A**
- **Next Steps**
- **Q&A**
- **Closing**

Tom





Celebrating more than 30 years of innovative ways
of doing things

Helping communities to save energy and reduce carbon
emissions through economically-sustainable smart-living



Peter Bates – who aim I?

- Senior Partner, pjb Associates Email her@pjb.co.uk
- PAS2035 Retrofit Coordinator, Advisor, Assessor
- Domestic Energy Assessor (DEA)
- Green Deal Advisor
- Chair/Facilitator, Cambridge Cleantech, “Sustainable Smart Homes” SIG
- Member - Transition Cambridge Energy Group, Carbon Neutral Cambridge, ECO Ely
- Organiser of the Circular Economy Club – Ely
- Former Teacher and Advisory Teacher
- And many other innovative projects of the last 30 years

Scope of this Webinar

- Things to consider **BEFORE** considering the Green Homes Grant (GHG)
- Overview of the GHG – Primary & Secondary Measures
- Overview of the eligible measures, but **NOT** the details of a particular measure
- Process for applying for the Grant (as far as we know)
- We are **NOT** able to cover detailed questions of a particular measure or any questions about your property
- We **WILL** try to cover questions specifically related to **PROCESS** of GHG

Each Home Counts – Pathway to high quality retrofit

Government commissioned Dr Peter Bonfield, CEO of BRE (Building Research Establishment) to provide identify way of providing “clarity and confidence to consumers” – resulted in 27 recommendations



New ways and opportunities for Retrofitting Domestic Properties

- **PAS 2035** - its not a new BSI Standard – its a framework for retrofit project delivery – focus on quality assurance, well planned, but developing slowly

PAS = Publicly Available Specification

BSI = UK standards body, Global certification company. Training, Testing

- **Green Homes Grant (GHG)** – £2 billion government funding to be launched 30 Sept 2020 in England alongside other existing grants – focus on creating jobs, but rushed – “loads of money” - opportunities for homeowners and “cowboys”

PAS2035 - framework for retrofit project delivery

Everyone needs to adopt this approach to retrofitting their homes (even if it is just in their head!!) :-

- Take a “**Whole House**” approach
- Think “**Fabric First**” – improve loft, windows, walls, doors and floors
- Develop a “**Medium to Long Term**” Plan

Domestic Properties are complex – No home is the same – always consider the occupants

New Format for EPCs – new link

Now available from 21 September 2020 – Today

<https://find-energy-certificate.digital.communities.gov.uk>

Beware of Cowboys – much easier for them to spot poorly rated EPCs & get your name from the Electoral Role

Find an energy performance certificate (EPC)

If your property does not have an EPC or it has expired, you can [get a new energy certificate](#).

16 EPCs for CB6 3DZ

Address	Energy rating	Expiry date
2, St. Andrews Way, ELY, CB6 3DZ	D	18 July 2022
3, St. Andrews Way, ELY, CB6 3DZ	E	6 June 2023
4, St. Andrews Way, ELY, CB6 3DZ	D	13 March 2021
5, St. Andrews Way, ELY, CB6 3DZ	D	29 April 2026
6, St. Andrews Way, ELY, CB6 3DZ	E	3 June 2026
7, St. Andrews Way, ELY, CB6 3DZ	E	11 December 2023
8, St. Andrews Way, ELY, CB6 3DZ	B	27 May 2026
15, St. Andrews Way, ELY, CB6 3DZ	D	28 July 2022

New EPC Format

(part of the EPC)

Energy performance certificate (EPC)

Certificate contents

- Rules on letting this property
- Energy performance rating for this property
- Breakdown of property's energy performance
- Environmental impact of this property
- How to improve this property's energy performance
- Estimated energy use and potential savings
- Contacting the assessor and accreditation scheme

52, St. Andrews Way ELY CB6 3DZ		Energy rating C
Valid until 20 June 2029	Certificate number 8861-7926-0960-2398-2996	

[Print this certificate](#)

Property type	This property is a semi-detached house.
Total floor area	It has a total floor area of 119 square metres.

Energy efficiency rating for this property

This property's current energy rating is C. It has the potential to be C.

[See how to improve this property's energy performance.](#)

Score	Energy rating	Current	Potential
92+	A		
81-91	B		
69-80	C	73 C	80 C
55-68	D		
39-54	E		
21-38	F		
1-20	G		

The graph shows this property's current and potential energy efficiency.

Properties are given a rating from A (most efficient) to G (least efficient).

Properties are also given a score. The higher this number, the lower your carbon dioxide (CO₂) emissions are likely to be.

The average energy rating and score for a property in England and Wales are D (60).

PAS2035 – Property Hub (Passport)

Increasingly, Installers and Retrofit Coordinators and Assessors will need to enter details of Retrofit Improvements into a **Data Warehouse**

Property Hub (Passport) will be for:

- homeowner facing view of relevant information from the Data Warehouse.
- Secure repository to find information about a property including who did what when and any guarantees etc.
- Will contain routes to advice on further home improvements and funding options
- Available end of 2020 or into 2021 ???

But keep all documents like guarantees, paid receipts, Cavity Wall, FENSA, MCS Certificates,

Green Homes Grant - Overview



- Voucher – up to £5000 or £10,000
- Measure split into Primary & Secondary Measures
- Start date - 30 September 2020
- Voucher and improvement measures completed by 31 March 2021 !!!! (at present)

More details at:

<https://www.gov.uk/guidance/apply-for-the-green-homes-grant-scheme>

GHG - Primary Measures - Insulation



1. Loft
2. Cavity Wall
3. Solid wall
4. Under-floor
5. Flat roof
6. Insulating a park home

Loft Insulation – Primary Measure



Install 270-300 mm over joists preferably – just about the heat loss perimeter



Cavity Wall Insulation – Primary Measure



Properties with Cavity wall

look out for the filled-in bore hole that confirms insulation or older properties (roughly 1930s to 1980s)



Solid Wall Insulation – Primary Measure



- Usually applies to traditional dwellings pre-1930 and 1930s
- External Wall Insulation
- Internal Wall Insulation
- Complex - preferably follow PAS2035
- Get a Retrofit Coordinator



Under floor Insulation – Primary Measure



- Usually applies to traditional dwelling pre-1930 & 1930s – 1950s
- Can be complex
- Preferably follow PAS2035
- Get a Retrofit Coordinator



Flat Roof Insulation – Primary Measure



Get a Trustmark Registered
Installer



Insulating a park home – Primary Measure



Complex – get a Retrofit Coordinators and a Trustmark Registered Installer that has expertise in Park Home Insulation



GHG - Primary Measures

– Low Carbon Heat Measures



- Air Source Heat Pump (ASHP)
- Ground Source Heat Pump
- Solar Thermal (liquid+ flat plate or evacuated tube collectors)
- Biomass boilers

All will also get funding under the – Renewable Heat Initiative (RHI)

Air Source Heat Pump – Primary Measure



Get at least three quotes from an MCS registered installer



Ground Source Heat Pump



Solar Thermal – Primary Measure



Get at least three quotes from an MCS registered installer



Biomass boilers – Primary Measure



NOT a wood burning stove



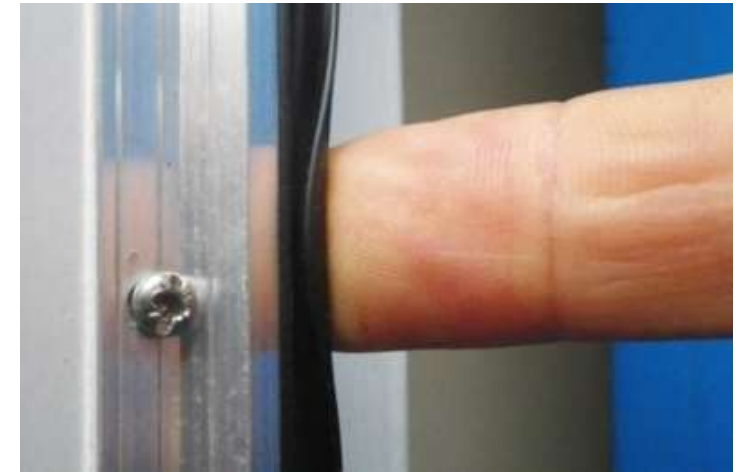
GHG Secondary Measures

capped by primary measures grant value

1. draught proofing
2. double/triple glazed windows
3. secondary glazing
4. external energy efficient doors
5. hot water tank insulation,
thermostats and heating controls



1. Draught Proofing and Ventilation



[DIY Draught-proofing guide](#)

GHG can cover:

‘Air tightness test to check for excessive infiltration and ensure adequate controlled ventilation.’

More: [‘Items that are / not GHG covered’](#)



2. Double or Triple Glazed Windows

only where replacing single glazed windows

Fit windows & doors before or as part of any solid wall insulation

Plan for secure opening at night for ventilation during a heatwave

You need docs to get EPC credit:
Keep docs & specs with U-values
or a [FENSA certificate](#)



3. Secondary glazing

Only with single glazing



DIY: Film, [magneglaze](#)



4. Energy efficient external doors

Only replacing doors installed before 2002



See: [CSE Guide](#)

Check they're
[Secured by Design](#)



5. Hot water & Heating Controls

- [Hot water tank thermostats](#)
- [Hot water tank insulation](#)
- [Heating controls](#) (e.g. smart heating controls, zone controls, intelligent delayed start thermostat and thermostatic radiator valves)



How to Apply



Use [Simple Energy Advice](#) (SEA) website:

1. Check if you're eligible for a voucher
2. Check what improvements may be suitable for your home
3. Choose which improvements you would like and see an estimate of how much they may cost
4. Find accredited tradespeople to get quotes from to carry out the work

More information on how to apply for a voucher will be made available on GOV.UK in due course.

CHECK ELIGIBILITY AND FIND
HOME IMPROVEMENTS



A homeowner or landlord
in England

Not: a new-build that's
not-yet-occupied

SEA Freephone: 0800 444202 Mon-Fri: 8am-8pm, Sat-Sun: 9am-5pm

Receiving Benefits?



If someone in your household receives:

Jobseeker's Allowance*

Disability Living Allowance

Employment & Support Allowance*

Personal Independence Payment

Income Support

Attendance Allowance

Pension Guarantee Credit

Carer's Allowance

Working Tax Credit

Severe Disablement Allowance

Child Tax Credits

Industrial Injuries Disablement Benefit

Universal Credit

or Housing Benefit

** Income-based or Contribution-based*

then homeowner (not landlord) is eligible for up to **£10,000 Full grant**

Build a 'plan' from SEA recommendations

Choose your improvements, eg:



Floor insulation (for a suspended floor)

Adding insulation to a suspended wooden floor is an effective way to reduce the heat loss of your home, especially if you have already installed loft and wall insulation. It is advisable to seek professional advice and you must use an approved installer.

GHG ELIGIBLE (PRIMARY)

**ADDED TO
PLAN**



INVESTMENT REQUIRED

£1000

SAVINGS PER YEAR UP TO

£40 – £55

Get Quotes for your 'Plan' eg:



You have added 3 recommendations to your plan. You'll find all the steps and things you need to consider to implement those measures.

TOTAL INVESTMENT REQUIRED	£10400
TOTAL SAVINGS PER YEAR	£260 - £415

Green Homes Grant

Save it as PDF?

To continue, print your plan. Contact installers and get quotes for your selected measures. Keep a record of these quotes - you will need them for the voucher application process.

Quotes from 3? Installers on: [SEA](#), [TrustMark](#) or [MCS](#) (for LC heat)

Apply for Voucher, Manage Installer



Choose one quote and apply for a GHG Voucher – from *Oct 1st*

If you receive a voucher, tell the installer and:

Planning Permission? EWI, Heat Pump, Solar Thermal?

Agree with installer: the work, details, schedule, payments

Check & ‘manage’ the work - near end: agree a snagging list

Installer completes work & redeems voucher before 31 March

Hooray!

Green Homes Grant



PROs:

- It's free money!
- An opportunity
- Improve comfort
- Cut carbon, bills
- Employment, training

CONs:

- Too few installers
- Quality risks
- Pay extra?
- Rush, delays?
- Unknown, untested

Make a long-term plan: no half-measures

Can you achieve your plan without GHG?



Thermal Imaging Training

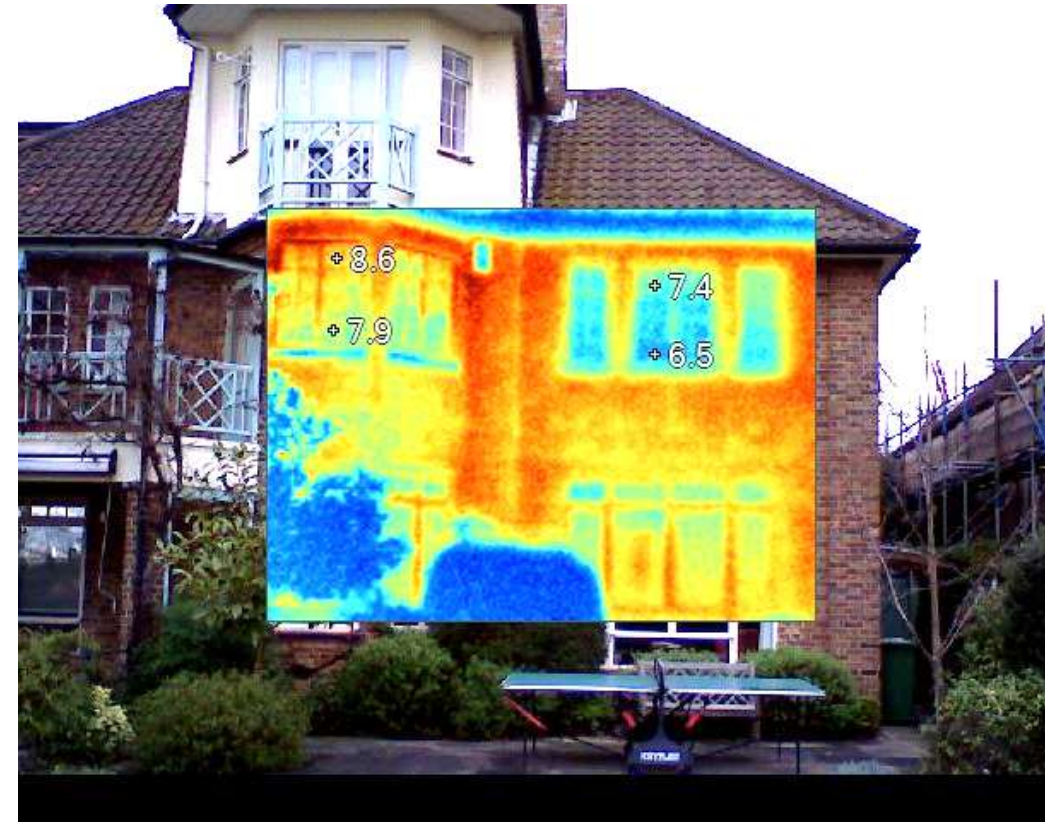
Tue 27th Oct, 7:30-9:00 pm

Wed 2nd Dec, 6:00-7:30 pm

Thu 14th Jan, 7:30-9:00 pm

Tue 23rd Feb, 6:00-7:30 pm

Cambridge
**Carbon
Footprint**



Solar Together

new [Cambridgeshire Solar Together scheme](#)

uses group-buying for solar panels, plus optional battery to bring you these at lower cost.

First auction in Oct 6th



More Online Tours & Talks

openecohomes.org/autumnseason



Please write feedback in Chat:

- What did you enjoy?
- Suggestions for improvement?

Donations welcome: cambridgecarbonfootprint.org/donate