

# Bought our home 15 years ago

A large lounge for  
socialising

Double glazing

A south facing roof  
for solar panels

Size and location

## Aims

Warm, comfortable  
home to live

Beautiful

Fit with our deep  
green ethics



# Contents

Insulate

Heating

Firewood

Wood and transport

Luxury - time & money

Decor and floors

White goods

Curtains and windows

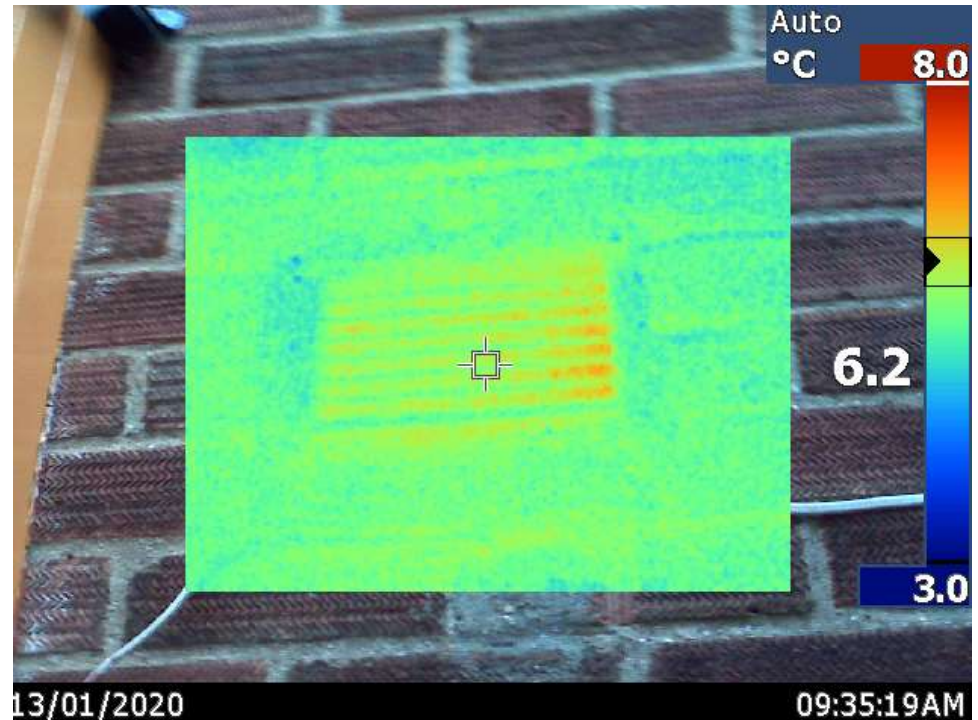
Laundry and ventilation

Water use reduction

Compost toilet

Garden

Achievements and dreams







**Insulate** cold and draughty places

Key holes

Cavity wall

Loft inc. hatch

Lagging pipes

Draught strips

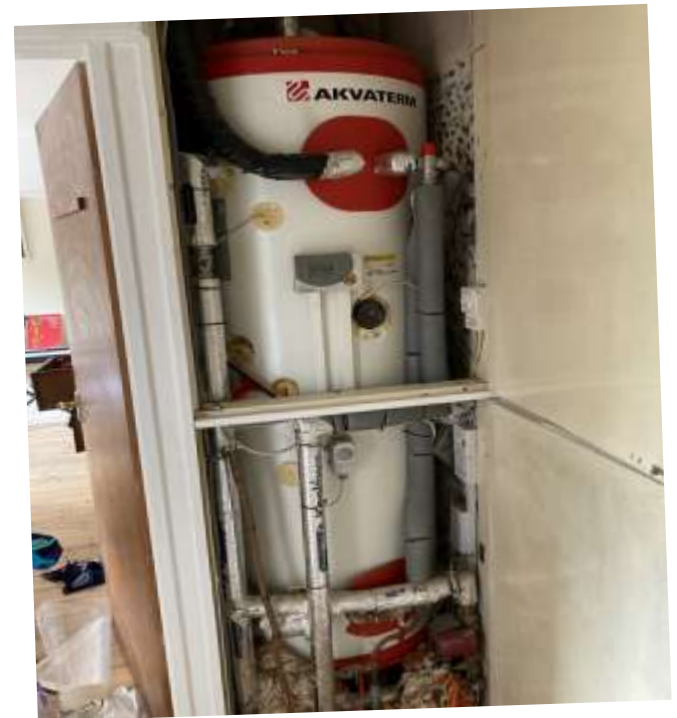
Under bath

Under sink



## Heating

Cut off the gas  
Used old rads & pipes  
Solar thermal  
Stove & back boilers  
Electric top up  
Well insulated tank





# Firewood

From conservation management

Logster - cutting

Tyre on tree stump - splitting



## **Wood and transport**

Drying for next 3 winters

Burn 5m cubed/ winter

Brick shed widened door bikes

Bike frames

Hempcrete not really wet

Parking space is wood storage & garden

Last flew 2006. No need for love miles.

Shared cars. Now own



**Luxury - time & money  
saving**

Skylight

Cutlery & crockery house

Kept bathroom & kitchen

Mainly 2<sup>nd</sup> hand furniture

Payback!







## **Decor and floors**

Stripped wallpaper

White & warm magnolia  
reflect light & heat

Less carpet

Cork floor



## White goods

Zeer pot or  
pot-in-pot  
fridge  
Permaculture  
magazine  
issue 80  
Clean cutlery



Ditched our  
dinosaur  
electric cooker  
Induction hob  
and fridge bills  
stayed same





## **Curtains and windows**

Trust instinct rehung

Ideas evolve wire not shelf

PVC, wood and metal windows



## Laundry and ventilation

Hot and cold fill washing machine

Pulley airers in wasted space

Clothes horses can lift in and out

Blocked brick holes

Some mould and dehumidifiers





# Water use reduction

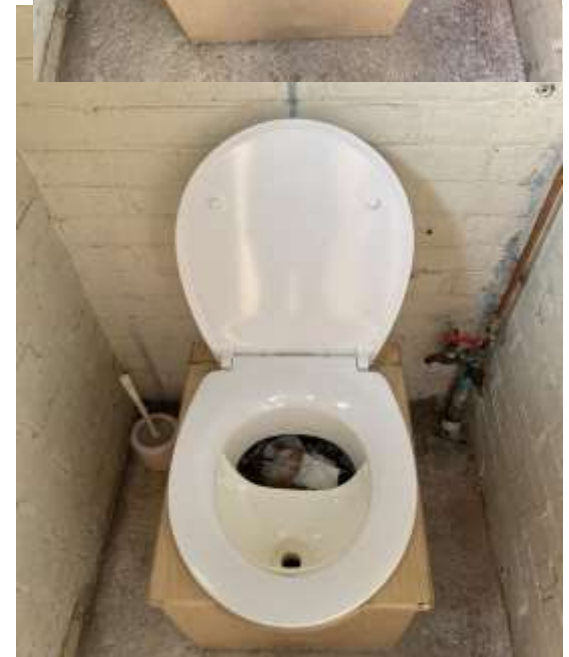
Mixer tap

Isolation valves

Dual flush



**Compost toilet**  
made by Strumpet  
and Trollop  
constructed by us  
May come inside



## Garden

Reroofed shed in clear plastic so  
growing zone and small green roof

5 key wildlife features

Water - off roof to pond

Compost

Rotting wood- Log pile and huegel  
bed

Long grass - some long for annual  
cut

Varied height - fruit trees and  
bushes





**Achieved 10- 15 year**

Snug home

£50/m water & electric

Time on log pile

Off gas

Spent £40,000 ish

Closer to nature

Self-respect

**Dreams are**

Sustainable doormat & line

A replacement window

Insulation in party wall

Grey water harvesting

A bore hole

Diminishing returns - lifeboat

mentality - societal changes XR





## Next steps

- Please give quick feedback: [form.jotform.com/211853362329052](https://form.jotform.com/211853362329052)
- Make a donation: [cambridgecarbonfootprint.org/donate/](https://cambridgecarbonfootprint.org/donate/)
- Share on social media: #OpenEcoHomes

**Thank you for your support!**





## Further Resources

- Find out how you can [get started with your retrofit](#)
- [Book another tour or talk](#)
- [Case Studies](#): Research our past homes
- [Borrow a thermal imaging camera](#) and get training
- Use Transition Cambridge's [personalised home energy advice tool](#)

