

# warm homes

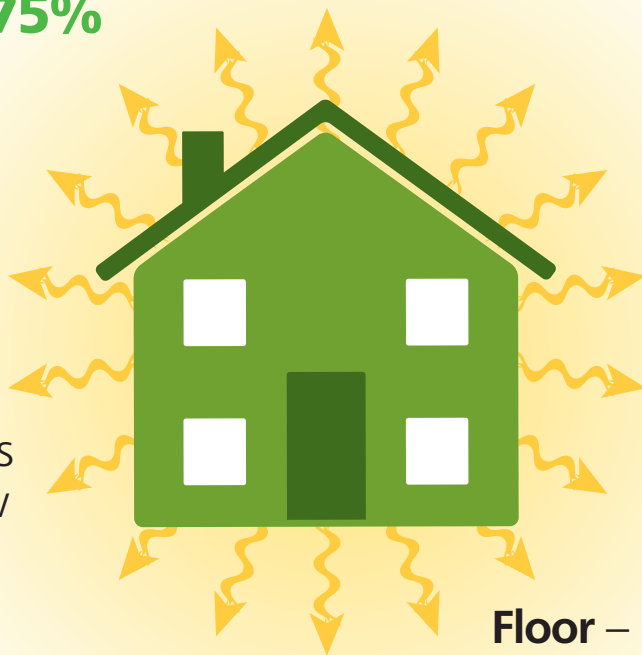
## Cutting down on heat loss

Here you can see where heat is lost in an average post-war house with few improvements

**Roof** – If you only have 100mm insulation topping this up to 300mm will cut your heat loss from the roof by **50%**.

If you only have 50mm you can reduce heat loss by **75%**

**Windows** – Even if you have double glazing – the best windows available now will cut your heat loss through windows by **70%**



**Doors** – Using thermal glass you can cut heat loss through doors by **60%**

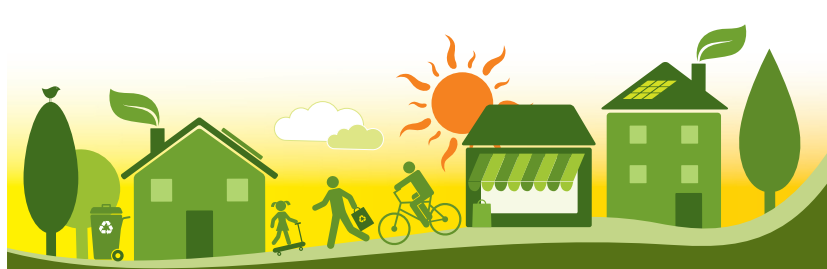
**Floor** – Insulating a suspended floor can cut heat loss by more than **50%**

**Walls** – Filling your cavity walls will cut heat loss from walls by **70%**

For a typical Foster Road semi-detached, with cavity walls (not filled), double glazing (not recent), suspended floor (not insulated), 100mm insulation in the roof and reasonably well draught proofed the heat losses would be roughly:

Floor	15%
Roof	5%
Outside Walls	43%
Windows	7%
Doors	3%
Ventilation	22%

*The remaining 5% is due to other losses which are difficult to manage*



Produced by  
Cambridge  
Carbon  
Footprint.org



with  
support  
from



designed by Zdgraphic.com