

# warm homes

## 1940s terraced house in Foster Road

### What can be done



This property is rated band E for energy efficiency. It has had no energy efficiency measures installed other than double glazed windows and doors plus limited loft insulation. A 'typical' household will spend around £1,000 per year on heating, lighting and hot water, excluding any additional

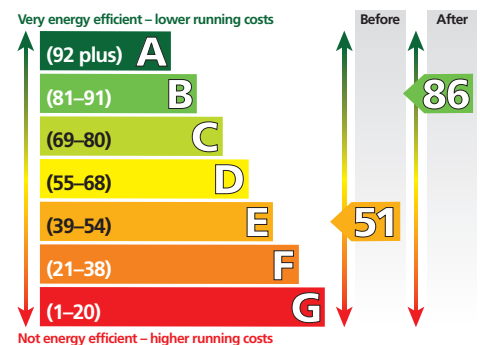
energy costs for running appliances such as television. The house will produce an estimated 4.6 tonnes of CO<sub>2</sub> per year.

Energy efficiency measures will raise the rating of the property and save money on bills. Some low and medium cost measures such as loft & cavity wall, pipes and hot water cylinder insulation plus installing low energy lighting can quickly raise the property to band C. Further (but high cost) improvements, including the installation of a new condensing boiler or installing renewable energy technologies, can further raise the rating to band B.

These improvements would save around 3.5 tonnes of CO<sub>2</sub> per year and roughly halve energy bills for heating, lighting and hot water.

### Energy efficiency rating

Here you can see the current energy performance rating and the level which can be reached if the recommended measures below are installed.

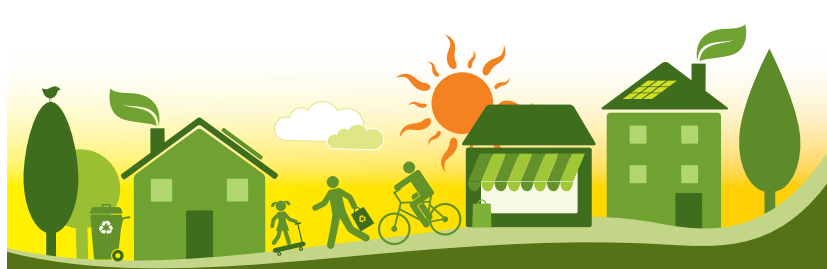


### Recommended measures

The table below shows recommended measures for improving the energy efficiency rating from band E to band B, alongside probable costs and savings.

Recommended measures*	Probable cost	Typical savings per year	Rating after improvement
Increase loft insulation to 270mm	£100 – £350	£105	D57
Cavity wall insulation	£500 – £1,500	£127	D63
Floor insulation	£800 – £1,200	£50	D66
Add additional 80mm jacket to hot water cylinder	£15 – £30	£9	D66
Low energy lighting for all fixed outlets	£30	£23	D67
Replace boiler with new condensing boiler	£2,200 – £3,000	£107	C73
Solar water heating	£4,000 – £6,000	£32	C75
Solar photovoltaic panels 2.5kWp	£9,000 – £14,000	£233	B86

\*Some of the recommended measures are financeable through the Green Deal



Produced by  
Cambridge  
Carbon  
Footprint.org



with support from



designed by Zdgraphic.com